



**AL-KO**  
QUALITY FOR LIFE

# MOBILE PURE AIR DUST EXTRACTORS

## AL-KO POWER UNIT

# MORE THAN CLEAN AIR



MADE IN GERMANY

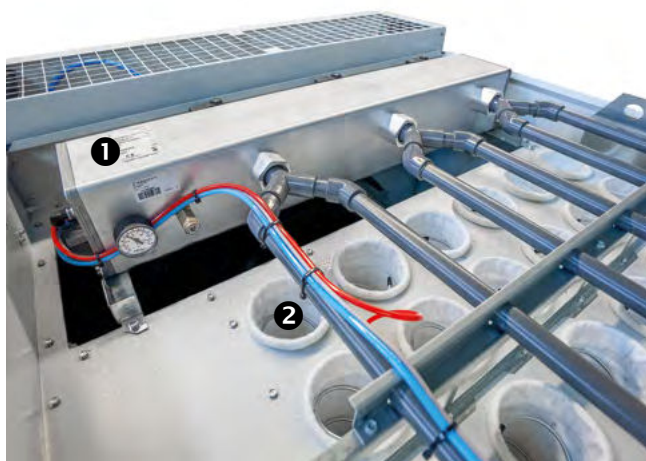
# A REAL ASSET AT WORK – PURE AIR DUST EXTRACTOR

## PURE AIR DUST EXTRACTOR POWER UNIT

- | Efficient and economical: Large air surge tank with fast diaphragm valves for effective OPTI JET® filter cleaning and lowest use of compressed air.
- | So simple and yet so effective: OPTI JET® dedusting and filter bag with snap ring lock.
- | Highly economical: energy-efficient motors according to IE3.
- | Safety in case of emergencies: Low-maintenance automatic fire extinguishing system (standard from POWER UNIT 250).
- | Completely calm: sound-insulated air recirculation by AL-KO.
- | All options are available: PLC control system for manual and automated operation (from POWER UNIT 160). Countless options from machine recognition to slide valve control and frequency-controlled operation to name but three.
- | No mess: container with window for visual checks.
- | Practical down to the last detail: container lock with ergonomic tension lever.
- | Retroactively extendable: Conversion to discharge via briquette press or rotary lock valve possible (from POWER UNIT 160).

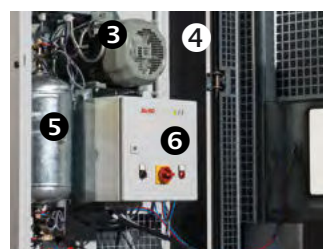
### The benefits for you:

- | High extraction performance
- | Compact design
- | 100% air recirculation without loss of temperature (residual dust < 0.1 mg/m<sup>3</sup>)
- | Integrated pre-separator and extendable control system
- | Optimum filter dedusting
- | Minimal noise level
- | Patented filling level control
- | Certified automatic extinguishing device, easy to maintain
- | Dust compartment for dust-free container change (optional: safety lock of the containers)
- | Freely configurable assemblies, exchangeable and expandable



- 1 Large air surge tank with fast diaphragm valves for optimum JET filter cleaning and lowest use of compressed air
- 2 Filter bag made of antistatic polyester needle felt material (BGIA-tested for dust class M) as standard with snap ring lock for easy handling

- 3 Energy-efficient motors according to IE3 as standard
- 4 Sound-insulated air recirculation for optimum noise emission values
- 5 Low-maintenance automatic fire extinguishing system with manual and automatic operation (standard with POWER UNIT 250, 300, 350 and 350\*)
- 6 PLC control from size 140 onwards; manual and automated operation possible; can be extended with many options (e.g. machine recognition; slide valve control; frequency controlled operation and many more functions besides)
- 7 Viewing window for easy fill level check
- 8 Ergonomically shaped clamping lever for simple container locking



# TOR POWER UNIT



**NEW!**

## AL-KO POWER UNIT 100/120

Type	100	100**	120**	120 M
Art.no.	192 488	192 489	192 490	192 498 01
Extraction nozzle	100 mm	100 mm	120 mm	120 mm
Nominal motor rating	1.1 kW/1 Ph	1.5 kW/3 Ph	1.5 kW/3 Ph	1.5 kW/3 Ph
Voltage	230 V/50 Hz	400 V/50 Hz	400 V/50 Hz	400 V/50 Hz
Max. flow rate	790 m <sup>3</sup> /h	790 m <sup>3</sup> /h	1,140 m <sup>3</sup> /h	1,140 m <sup>3</sup> /h
Nominal flow rate*	565 m <sup>3</sup> /h	565 m <sup>3</sup> /h	814 m <sup>3</sup> /h	814 m <sup>3</sup> /h
Vacuum at nominal flow rate	2,118 Pa	2,124 Pa	2,180 Pa	2,180 Pa
Filter area	4.1 m <sup>2</sup>	4.1 m <sup>2</sup>	5.1 m <sup>2</sup>	5.1 m <sup>2</sup>
Filter dedusting	Manual	Manual	Manual	Motoric
Pre-separator	Integrated	Integrated	Integrated	Integrated
Swarf collection capacity	approx. 135 L	approx. 135 L	approx. 135 L	approx. 135 L
Sound pressure level***	69 dB(A)	69 dB(A)	71 dB(A)	71 dB(A)
Dimensions (L/W/H) in mm	1,178 x 650 x 1,973	1,178 x 650 x 1,973	1,178 x 650 x 1,973	1,178 x 650 x 1,973
Weight net	approx. 114 kg	approx. 116 kg	approx. 117 kg	approx. 121 kg

\*According GS-HM-03 dusted

\*\*On stock

\*\*\*Free sound field measurement according to DIN EN 11201

M – Version with automatic filter dedusting and machine detection

## AL-KO POWER UNIT 160



**INCL. DUST COMPARTMENT**

Type	160 H**	160 HM	160 P**	160 K****
Art.no.	199 001	199 363 01	192 199 01	199 018 02
Extraction nozzle	160 mm	160 mm	160 mm	160 mm
Nominal motor rating	2.2 kW/3 Ph	2.2 kW/3 Ph	2.2 kW/3 Ph	2.2 kW/3 Ph
Voltage	400 V/50 Hz	400 V/50 Hz	400 V/50 Hz	400 V/50 Hz
Max. flow rate	2,000 m <sup>3</sup> /h	2,000 m <sup>3</sup> /h	2,000 m <sup>3</sup> /h	2,000 m <sup>3</sup> /h
Nominal flow rate*	1.448 m <sup>3</sup> /h	1.448 m <sup>3</sup> /h	1.448 m <sup>3</sup> /h	1.448 m <sup>3</sup> /h
Vacuum at nominal flow rate	2,503 Pa	2,503 Pa	2,503 Pa	2,503 Pa
Filter area	9.1 m <sup>2</sup>	9.1 m <sup>2</sup>	9.1 m <sup>2</sup>	9.1 m <sup>2</sup>
Filter dedusting	Manual	Manual	Pressurised air	Pressurised air
Pre-separator	Integriert	Integrated	Integrated	Integrated
Swarf collection capacity (net/gross)	165 L / 241 L	165 L / 241 L	165 L / 241 L	165 L / 241 L
Sound pressure level***	70 dB(A)	70 dB(A)	70 dB(A)	70 dB(A)
Dimensions (L / W / H) in mm	1.800 x 830 x 2.050	1,718 x 830 x 2,050	1,718 x 830 x 2,050	1,718 x 830 x 2,050
Weight net	330 kg	330 kg	340 kg	350 kg

\*According GS-HM-03 dusted

\*\*On stock

\*\*\*Free sound field measurement according to DIN EN 11201

\*\*\*\*K – integrated compressor



## AL-KO POWER UNIT 200

Typ	200 P**	200 K <sup>1)</sup>	200 P-ZRS	200 P-BP 30-40
Art.no.	192 491 01	199 609 01	199 044 01	199 019 02
Extraction nozzle	200 mm	200 mm	200 mm	200 mm
Nominal motor rating	3.0 kW/3 Ph	3.0 kW/3 Ph	3.0 kW/3 Ph	3.0 kW/3 Ph
Voltage	400V/50Hz	400V/50Hz	400V/50Hz	400V/50Hz
Max. flow rate	3,010 m <sup>3</sup> /h	3,010 m <sup>3</sup> /h	3,010 m <sup>3</sup> /h	3,010 m <sup>3</sup> /h
Nominal flow rate*	2,262 m <sup>3</sup> /h	2,262 m <sup>3</sup> /h	2,262 m <sup>3</sup> /h	2,262 m <sup>3</sup> /h
Vacuum at nominal flow rate	2,563 Pa	2,563 Pa	2,563 Pa	2,563 Pa
Filter area	13.8 m <sup>2</sup>	13.8 m <sup>2</sup>	13.8 m <sup>2</sup>	13.8 m <sup>2</sup>
Filter dedusting	Pressurised air	Pressurised air	Pressurised air	Pressurised air
Pre-separator	Integrated	Integrated	Integrated	Integrated
Swarf collection capacity (net / gross)	2 x 165 L / 2 x 241 L	2 x 165 L / 2 x 241 L	Rotary lock valve	Briquette press
Sound pressure level***	72 dB(A)	72 dB(A)	72 dB(A)	72 dB(A)
Dimensions (L / W / H) in mm	2,296 x 830 x 2,050	2,296 x 830 x 2,050	2,297 x 836 x 2,607	2,631 x 1,307 x 2,111
Briquette / rotary lock valve performance	–	–	15,744 L/h <sup>2)</sup>	up to 40 kg/h <sup>2)</sup>
Briquette diameter	–	–	–	40 mm
Weight net	460 kg	470 kg	550 kg	950 kg

\*According GS-HM-03 dusted

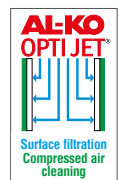
\*\*On stock

\*\*\*Free sound field measurement according to DIN EN 11201

<sup>1)</sup> Compressor integrated

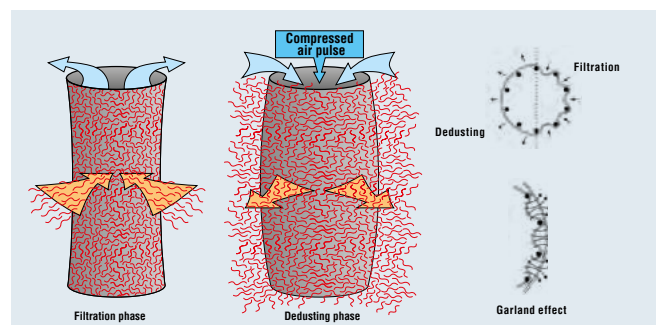
<sup>2)</sup> Depending on the material

## THE AL-KO HIGH-PERFORMANCE FILTER SYSTEM „AL-KO OPTI JET”



### Ihre Vorteile:

- | Raw air impacts onto the filter element from the outside
- | Improved cleaning by injection – longer filter service life
- | “Real” surface filtration by special treatment of the filter surface
- | Optimum air permeability
- | Latest BIA test certificates for dust class M
- | Filter electrically conductive as standard



NEU!  
30 % MORE  
VACUUM

INCL. DUST  
COMPARTMENT



## AL-KO POWER UNIT 250

Type	250 P**	250 P-ZRS	250 P-BP 30-40	250 P-BP 30-50
Art.no.	195 676 03	195 875 03	199 537 01	195 872 05
Extraction nozzle	250 mm	250 mm	250 mm	250 mm
Nominal motor rating	7.5 kW/3 Ph	7.5 kW/3 Ph	7.5 kW/3 Ph	7.5 kW/3 Ph
Voltage	400 V/50 Hz	400 V/50 Hz	400 V/50 Hz	400 V/50 Hz
Max. flow rate	4,900 m <sup>3</sup> /h	4,900 m <sup>3</sup> /h	4,900 m <sup>3</sup> /h	4,900 m <sup>3</sup> /h
Nominal flow rate*	3,534 m <sup>3</sup> /h	3,534 m <sup>3</sup> /h	3,534 m <sup>3</sup> /h	3,534 m <sup>3</sup> /h
Vacuum at nominal flow rate	3,184 Pa	3,184 Pa	3,184 Pa	3,184 Pa
Filter area	22.4 m <sup>2</sup>	22.4 m <sup>2</sup>	22.4 m <sup>2</sup>	22.4 m <sup>2</sup>
Pre-separator	Integrated	Integrated	Integrated	Integrated
Extinguishing device	Integrated	Integrated	Integrated	Integrated
Swarf collection capacity (net / gross)	2 x 165 L / 2 x 250 L	Rotary lock valve	Briquette press	Briquette press
Sound pressure level***	71 dB(A)	71 dB(A)	71 dB(A)	71 dB(A)
Dimensions (L / W / H) in mm	2,351 x 1,058 x 2,361	2,387 x 1,058 x 2,807	2,351 x 1,332 x 2,619	2,351 x 1,361 x 2,620
Briquette / Rotary lock valve performance	–	15,744 L/h <sup>2)</sup>	up to 40 kg/h <sup>2)</sup>	up to 50 kg/h <sup>2)</sup>
Briquette diameter	–	–	40 mm	50 mm
Weight net	758 kg	728 kg	1,381 kg	1,381 kg

\*According GS-HM-03 dusted

\*\*On stock

\*\*\* Free sound field measurement according to DIN EN 11201

<sup>2)</sup> Depending on the material

INCL. DUST  
COMPARTMENT



## AL-KO POWER UNIT 300

Type	300 P**	300 P-ZRS	300 P-BP 30-50	300 P-BP 50-70
Art.no.	195 677 03	195 876 03	192 006 05	195 874 05
Extraction nozzle	300 mm	300 mm	300 mm	300 mm
Nominal motor rating	7.5 kW/3 Ph	7.5 kW/3 Ph	7.5 kW/3 Ph	7.5 kW/3 Ph
Voltage	400 V/50 Hz	400 V/50 Hz	400 V/50 Hz	400 V/50 Hz
Max. flow rate	6,000 m <sup>3</sup> /h	6,000 m <sup>3</sup> /h	6,000 m <sup>3</sup> /h	6,000 m <sup>3</sup> /h
Nominal flow rate*	5,089 m <sup>3</sup> /h	5,089 m <sup>3</sup> /h	5,089 m <sup>3</sup> /h	5,089 m <sup>3</sup> /h
Vacuum at nominal flow rate	2,587 Pa	2,587 Pa	2,587 Pa	2,587 Pa
Filter area	30 m <sup>2</sup>	30 m <sup>2</sup>	30 m <sup>2</sup>	30 m <sup>2</sup>
Pre-separator	Integrated	Integrated	Integrated	Integrated
Extinguishing device	Integrated	Integrated	Integrated	Integrated
Swarf collection capacity (net / gross)	3 x 165 L / 3 x 250 L	Rotary lock valve	Briquette press	Briquette press
Sound pressure level***	71 dB(A)	71 dB(A)	71 dB(A)	71 dB(A)
Dimensions (L / W / H) in mm	3,000 x 1,058 x 2,361	3,000 x 1,058 x 3,027	3,000 x 1,361 x 2,817	3,000 x 1,351 x 2,817
Briquette / Rotary lock valve performance	–	15,744 L/h <sup>2)</sup>	up to 50 kg/h <sup>2)</sup>	up to 70 kg/h <sup>2)</sup>
Briquette diameter	–	–	50 mm	70 mm
Weight net	838 kg	832 kg	1,570 kg	1,570 kg

\*According GS-HM-03 dusted

\*\*\* Free sound field measurement according to DIN EN 11201

<sup>2)</sup> Depending on the material



# AL-KO POWER UNIT 350 AND POWER UNIT 350+ THE NEW PERFORMANCE CLASS



## The benefits for you:

- | Highest extraction performance
- | Lowest energy consumption A+
- | Optimum safety
- | Compact construction

## THE NEW LEVEL OF PERFECTION

- | New technology
- | Unique design
- | Made in Germany
- | Patented air routing



AL-KO POWER UNIT 350 and POWER UNIT 350+ is the new performance class among pure air dust extractors. The powerful 11 kW **IE3 motor** extracts dust and swarf with a gigantic **flow rate of more than 8,000 m<sup>3</sup>/h**, while being very economical in terms of consumption. Thanks to 57 filters, the AL-KO POWER UNIT 350 and POWER UNIT 350+ offers a **gigantic filter surface** of 73 m<sup>2</sup> – enough to lower the residual dust content of the **air which is 100% recycled** to < 0.1 mg/m<sup>3</sup> (H3).

Naturally, the AL-KO POWER UNIT 350 and 350+ uses tried and tested, and further improved, AL-KO OPTI JET<sup>®</sup> technology and the **integrated pre-separator** comes as standard. While performing on a gigantic level, AL-KO POWER UNIT 350 and

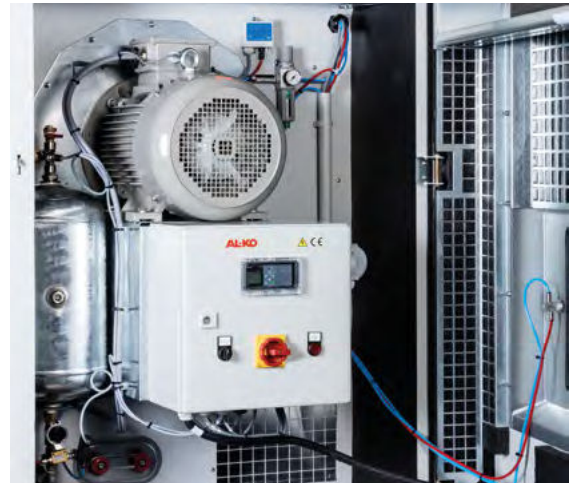
POWER UNIT 350+ is never noisy. The maximum sound level at a distance of one meter measures according to DIN EN ISO 11201 – **absolutely quiet 71 dB (A)** – probably the lowest figure in this class. This is not surprising as the AL-KO POWER UNIT 350 and POWER UNIT 350+ **is equipped with real sound-absorbing panels – as standard.**

Thanks to the unique design and the further optimised internal layout, AL-KO POWER UNIT 350 is extremely space-saving: with its dimensions of 3,129 x 1,058 x 2,351 mm (LxWxH) the AL-KO POWER UNIT 350 is significantly smaller than many other devices of the 300 class.

# GIGANTIC PERFORMANCE

## AL-KO POWER UNIT 350

- | Max. flow rate up to 10.000 m<sup>3</sup>/h
- | Approx. 73 m<sup>2</sup> filter surface, residual dust content according to H3
- | Pre-separator as standard
- | Already complies with DIN EN 16770
- | Tested back-up flap
- | Integrated automatic extinguisher



## AL-KO POWER UNIT 350

Type	350 P	350 P-ZRS	350 P-BP 30-50	350 P-BP 50-70
Art.no.	199 560	199 563	199 561	199 562
Extraction nozzle	350 mm	350 mm	350 mm	350 mm
Nominal motor rating	11.0 kW/3 Ph	11.0 kW/3 Ph	11.0 kW/3 Ph	11.0 kW/3 Ph
Voltage	400 V/50 Hz	400 V/50 Hz	400 V/50 Hz	400 V/50 Hz
Max. flow rate	8,500 m <sup>3</sup> /h	ca. 8,500 m <sup>3</sup> /h	ca. 8,500 m <sup>3</sup> /h	ca. 8,500 m <sup>3</sup> /h
Nominal flow rate*	6,927 m <sup>3</sup> /h	6,927 m <sup>3</sup> /h	6,927 m <sup>3</sup> /h	6,927 m <sup>3</sup> /h
Vacuum at nominal flow rate	2,543 Pa	2,543 Pa	2,543 Pa	2,543 Pa
Filter area	73 m <sup>2</sup>	73 m <sup>2</sup>	73 m <sup>2</sup>	73 m <sup>2</sup>
Pre-separator	Integrated	Integrated	Integrated	Integrated
Extinguishing device	Integrated	Integrated	Integrated	Integrated
Swarf collection capacity (net / gross)	3 x 165 L / 3 x 250 L	Rotary lock valve	Briquette press	Briquette press
Sound pressure level***	71 dB(A)	71 dB(A)	71 dB(A)	71 dB(A)
Dimensions (L / W / H) in mm	3,129 x 1,058 x 2,361	3,164 x 1,058 x 3,027	3,129x1,361x2,817	3,129x1,361x2,817
Briquette / Rotary lock valve performance	–	15,744 L/h <sup>2)</sup>	up to 50 kg/h <sup>2)</sup>	up to 70 kg/h <sup>2)</sup>
Briquette diameter	–	–	50 mm	70 mm
Weight net	977 kg	1,010 kg	1,740 kg	1,740 kg

\*GS-HM-03

\*\*\* Free sound field measurement according to DIN EN 11201

<sup>2)</sup> Depending on the material

## AL-KO POWER UNIT 350<sup>+</sup>

Type	350 <sup>+</sup> P	350 <sup>+</sup> P-ZRS	350 <sup>+</sup> P-BP 30-50	350 <sup>+</sup> P-BP 50-70
Art.no.	199 843	199 846	199 844	199 845
Extraction nozzle	355 mm	355 mm	355 mm	355 mm
Nominal motor rating	15.0 kW/3 Ph	15.0 kW/3 Ph	15,0 kW/3 Ph	15,0 kW/3 Ph
Voltage	400 V/50 Hz	400 V/50 Hz	400 V/50 Hz	400 V/50 Hz
Max. flow rate	ca. 10,000 m <sup>3</sup> /h	ca. 10,000 m <sup>3</sup> /h	ca. 10,000 m <sup>3</sup> /h	ca. 10,000 m <sup>3</sup> /h
Nominal flow rate*	7,127 m <sup>3</sup> /h	7,130 m <sup>3</sup> /h	7,127 m <sup>3</sup> /h	7,127 m <sup>3</sup> /h
Vacuum at nominal flow rate	3,347 Pa	3,347 Pa	3,347 Pa	3,347 Pa
Filter area	73 m <sup>2</sup>	73 m <sup>2</sup>	73 m <sup>2</sup>	73 m <sup>2</sup>
Pre-separator	Integrated	Integrated	Integrated	Integrated
Extinguishing device	Integrated	Integrated	Integrated	Integrated
Swarf collection capacity (net / gross)	3 x 165 L / 3 x 250 L	Rotary lock valve	Briquette press	Briquette press
Sound pressure level***	73 dB(A)	73 dB(A)	73 dB(A)	73 dB(A)
Dimensions (L / W / H) in mm	3,130 x 1,058 x 2,361	3,164 x 1,058 x 3,027	3,130 x 1,361 x 2,817	3,130 x 1,361 x 2,817
Briquette / Rotary lock valve performance	–	15,744 L/h <sup>2)</sup>	up to 50 kg/h <sup>2)</sup>	up to 70 kg/h <sup>2)</sup>
Briquette diameter	–	–	50 mm	70 mm
Weight net	1,040 kg	1,027 kg	1,802 kg	1,802 kg

\*GS-HM-03

\*\*\* Free sound field measurement according to DIN EN 11201

<sup>2)</sup> Depending on the material

## **AL-KO EXTRACTION TECHNOLOGY – YOUR STRONG PARTNER**

In Europe and across the world, thousands of customers every year choose quality products from AL-KO Extraction Technology. The enthusiasm for these products and customers' confidence in us demonstrates that even today, products bearing the "MADE IN GERMANY" label have a future – if they are consistently based on innovation and superior quality.

Look to the future with us, and as our customer and partner profit from the performance, the quality and the security offered by the AL-KO brand.

**AL-KO THERM GMBH**  
**Extraction Technology**  
Hauptstraße 248 – 250  
89343 Jettingen-Scheppach  
Germany  
Fon +49 8225 39-2412  
Fax +49 8225 39-2435  
absaug.technik@al-ko.com  
**al-ko-extractionstechnology.com**

Figures show configuration examples which are not available in every market.  
Please ask your AL-KO advisor.

Subject to modifications in response to technical developments.  
No liability accepted for mistakes and printing errors.

23-0401/01